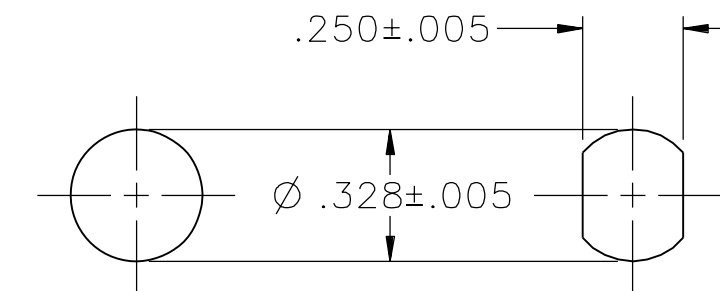


PART NUMBER	ITEM ①	BODY	COLOR	ITEM ②	STUD	ITEM ③	THUMB NUT	COLOR	ITEM ④	WASHER	ITEM ⑤	CAPTIVE NUT	ITEM ⑥	MOUNTING NUT
111-0101-001		NYLON	WHITE		BRASS SILVER PL .00005 MIN		NYLON	WHITE		BRASS SILVER PL .0001 MIN		BRASS NICKEL PL		BRASS NICKEL PL .0001 MIN
111-0102-001			RED					RED						
111-0103-001			BLACK					BLACK						
111-0104-001			GREEN					GREEN						
111-0105-001														
111-0106-001			ORANGE					ORANGE						
111-0107-001			YELLOW					YELLOW						
111-0108-001			BROWN					BROWN						
111-0109-001														
111-0110-001			BLUE					BLUE						
111-0111-001														
111-0112-001			VIOLET					VIOLET						
111-0113-001			GRAY					GRAY						
111-0114-001														
111-0115-001														
111-0116-001														
111-0117-001														
111-0118-001														
111-0119-001														
111-0120-001														

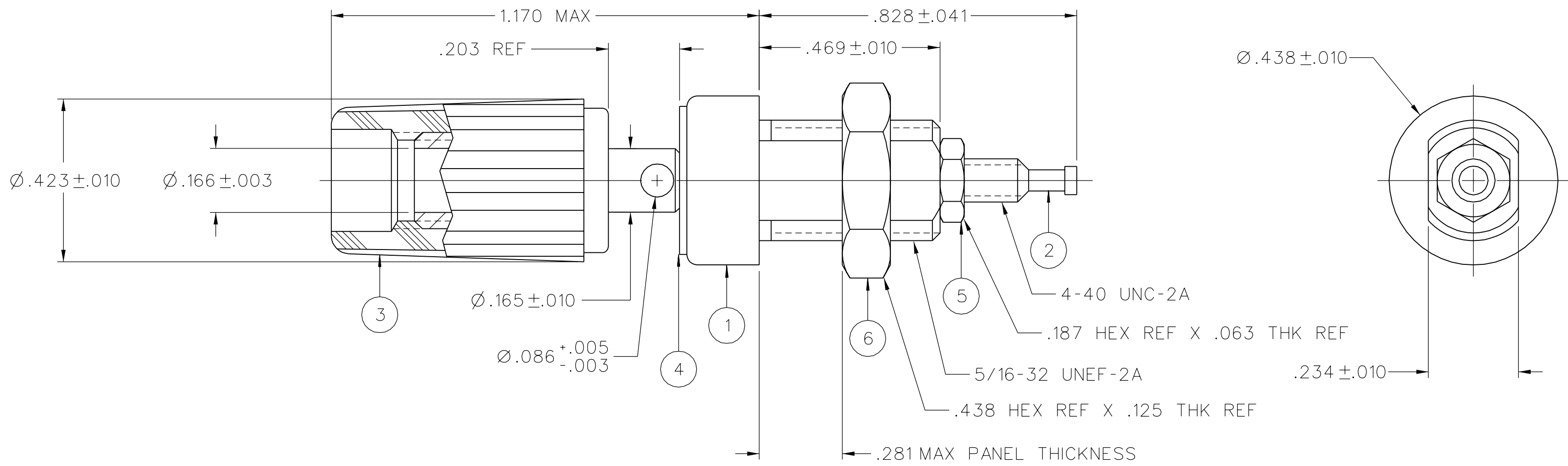
DRAWING NO.  
C - 111-0101/0120-001

REVISIONS	
0	

REVISED AND REDRAWN. DRAWING WAS "C" SIZE 111-0101/0120-001/110 DATED 9-12-88. SPLIT INTO 4 SEPERATE DWGS. CREATED SHEET 2.  
\*\*\*\*\*  
\* REVISION NUMBER FOLLOWED BY AN ALPHA \*  
\* CHARACTER INDICATES DRAWING CLARIFICATION OR PART NUMBER ADDITION ONLY. \*  
\*\*\*\*\*



MOUNTING HOLE OPTIONS  
2:1




NOTES:  
SPECIFICATIONS:  
ELECTRICAL:  
CURRENT RATING: 15 AMPS DC MINIMUM  
DIELECTRIC WITHSTANDING VOLTAGE: 5700 VRMS MINIMUM  
RECOMMENDED WORKING VOLTAGE: 2850 VRMS MAXIMUM  
INSULATION RESISTANCE: 5000 MEGOHMS MINIMUM  
CONTACT RESISTANCE: 10 MILLIOHMS MAXIMUM (MATING PLUG)  
CAPACITANCE (STUD TO PANEL): 3.3 PF NOMINAL  
MECHANICAL:  
THUMBNUIT WITHSTANDING TORQUE: 4 IN-LB MINIMUM  
INSULATOR WITHSTANDING TORQUE: 8 IN-LB MINIMUM  
PLASTIC MOUNTING THREAD STRIPPING TORQUE: 6 IN-LB MINIMUM  
WIRE ACCEPTABILITY: 16 AWG OR SMALLER  
WIRE ATTACHMENT: SOLDER  
MATING REFERENCE:  
BANANA PLUG WIDTH: .175 NOMINAL  
CROSSHOLE WIRE: 12 AWG OR SMALLER  
THUMBNUIT DURABILITY: 1000 CYCLES  
ENVIRONMENTAL:  
(MEETS OR EXCEEDS THE APPLICABLE PARAGRAPH OF MIL-P-55149)  
OPERATING TEMPERATURE: -55 DEG C TO 85 DEG C  
TEMPERATURE RISE AT RATED CURRENT: 10 DEG C  
CORROSION: MIL-STD-202, METHOD 101, CONDITION B  
SHOCK: MIL-STD-202, METHOD 213, CONDITION 1  
VIBRATION: MIL-STD-202, METHOD 201  
MOISTURE RESISTANCE: MIL-STD-202, METHOD 106

CUSTOMER DRAWING

THIS DRAWING TO BE INTERPRETED PER ASME Y 14.5M - 1994

"µSTATION"

COMPANY CONFIDENTIAL

TOLERANCE UNLESS OTHERWISE SPECIFIED		DRAWN BY	DATE	 <b>Cinch</b> CONNECTIVITY SOLUTIONS a bel group	Cinch Connectivity Solutions P.O. Box 1732 Waseca, MN 56093 1-800-247-8256	
DECIMALS	mm	RJB	1-9-03		TITLE	
.XX	_____	CHECKED BY	DATE	ASSEMBLY, BINDING POST INSULATED, THREADED STUD		
.XXX	_____	APPROVED BY	DATE	SHEET	DRAWING NO.	
MATL	_____	RJB	2-12-03	2 OF 2	C - 111-0101-0120-001	
FINISH	_____	RELEASE DATE	2-12-03			
		U/M INCH	SCALE 4:1			