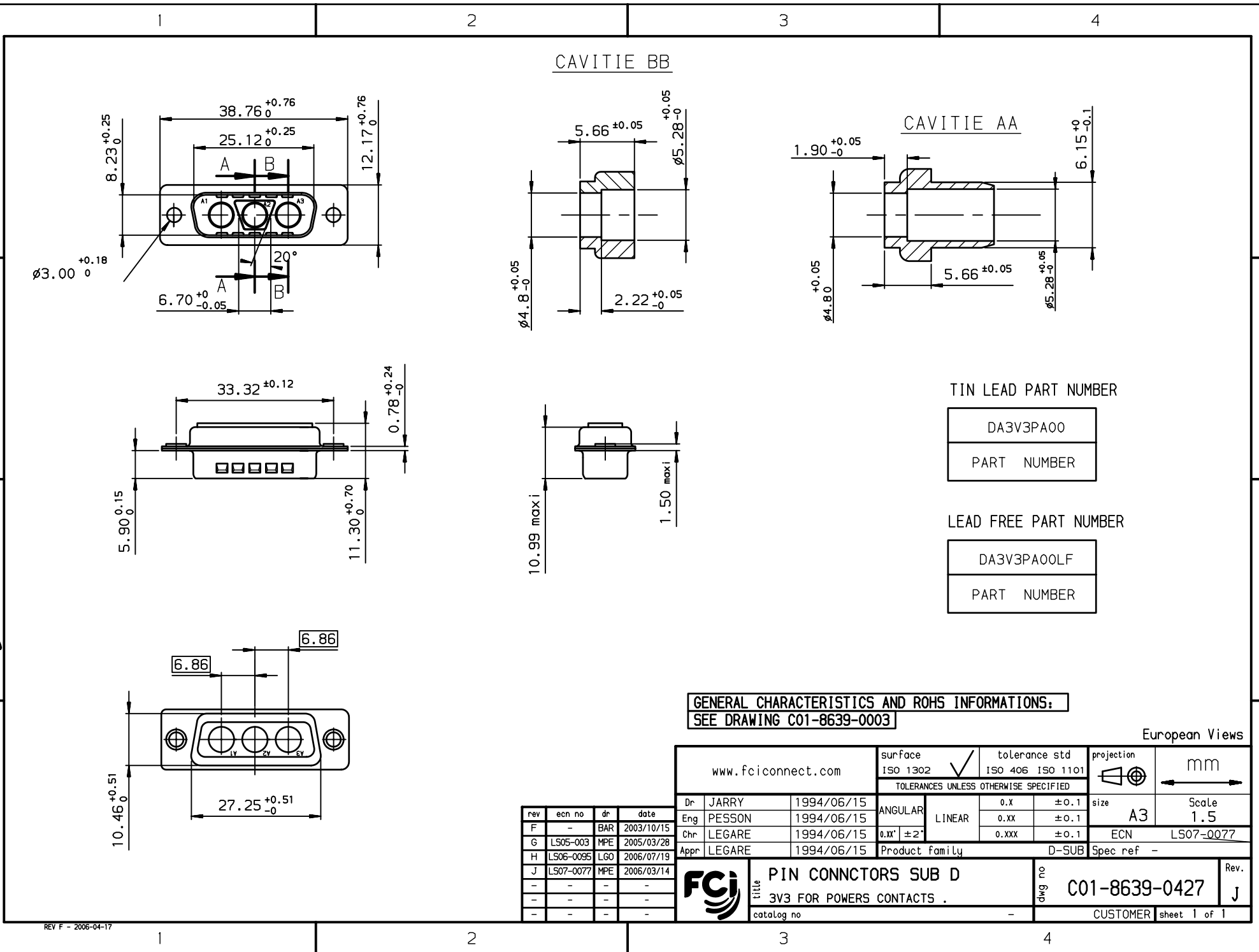


Copyright FCI. FCI



TIN LEAD PART NUMBER
 DA3V3PA00
 PART NUMBER

LEAD FREE PART NUMBER
 DA3V3PA00LF
 PART NUMBER

GENERAL CHARACTERISTICS AND ROHS INFORMATIONS:
 SEE DRAWING C01-8639-0003

| rev | ecn no | dr | date |
|-----|-----------|-----|------------|
| F | - | BAR | 2003/10/15 |
| G | LS05-003 | MPE | 2005/03/28 |
| H | LS06-0095 | LGO | 2006/07/19 |
| J | LS07-0077 | MPE | 2006/03/14 |
| - | - | - | - |
| - | - | - | - |

| www.fciconnect.com | | surface | tolerance std | projection | mm |
|--|--------|------------|----------------------|------------|--|
| | | ISO 1302 ✓ | ISO 406 ISO 1101 | | |
| TOLERANCES UNLESS OTHERWISE SPECIFIED | | | | | |
| Dr | JARRY | 1994/06/15 | 0.X | ±0.1 | size A3 |
| Eng | PESSON | 1994/06/15 | 0.XX | ±0.1 | Scale 1.5 |
| Chr | LEGARE | 1994/06/15 | 0.XXX | ±0.1 | ECN LS07-0077 |
| Appr | LEGARE | 1994/06/15 | Product family D-SUB | | Spec ref - |
| PIN CONNECTORS SUB D 3V3 FOR POWERS CONTACTS . | | | | | dwg no C01-8639-0427 Rev. J |
| catalog no | | | | CUSTOMER | sheet 1 of 1 |

REV F - 2006-04-17