

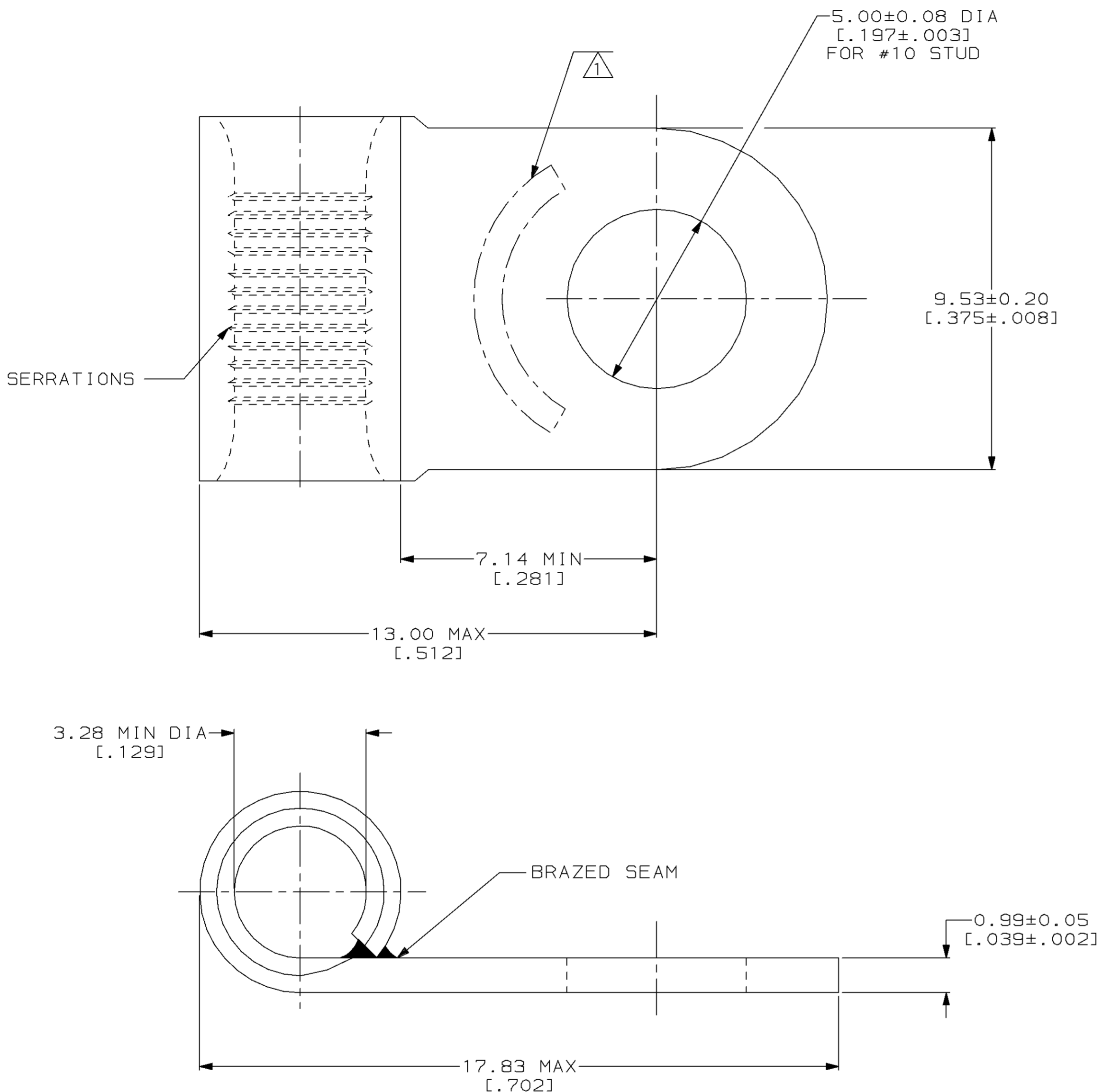
THIS DRAWING IS UNPUBLISHED. RELEASED FOR PUBLICATION, 19 .
 © COPYRIGHT 19 BY AMP INCORPORATED. ALL INTERNATIONAL RIGHTS RESERVED.

| LOC | DIST | P | F | ZONE | LTR | DESCRIPTION | DATE | APPD |
|-----|------|---|---|------|-----|--------------------------------------|--------|---------|
| G | 14 | | | | E | REV, RDRW, & SM PKG PER 0720-0008-93 | 4-5-93 | APP DAP |

METRIC
 DIMENSIONS LISTED IN mm [INCHES]

| | |
|--------------------------------|----------------------------|
| AMP WIRE RANGE | UL E13288 Listed |
| 12-10 AWG SOLID OR STRANDED | 12-10 AWG STRANDED |
| SR LR7189 Certified | MILITARY P/N AND CLASS |
| 12-10 AWG SOLID OR STRANDED | NOT APPLICABLE |

- ① STAMP AMP 12-10* APPROX AS SHOWN
- ② MEETS EQUIVALENT REQUIREMENTS OF ASTM B-152
- ③ MEETS EQUIVALENT REQUIREMENTS OF MIL-T-10727



| | | |
|----------|------------------|-----------|
| 50 | LOOSE PIECE, BOX | 8-36271-2 |
| ---- | LOOSE PIECE | 36271 |
| QUANTITY | PACKAGE TYPE | PART NO |

| | | | | | |
|--|--|---|---|---|--|
| AMP INCORPORATED CUSTOMER SERVICE SYSTEMS | | MAX RECOMMENDED OPERATING TEMPERATURE: 170°C MAX | DO NOT SCALE PRINT. UNLESS SPECIFIED DIMENSIONS IN mm [INCHES] TOLERANCES ON: 2 PLC DEC ± - 3 PLC DEC ± - ANGLES ± - | DR 4-5-93 TA BRINKMAN CHK 4-5-93 DA PATTERSON APPD 4-5-93 DE MILLER APPD 4-5-93 JL MECKLEY PRODUCT SPEC - APPLICATION SPEC - WEIGHT - | AMP AMP Incorporated Harrisburg, PA 17105-3608 |
| FOR ADDITIONAL PRODUCT INFORMATION OR COPIES OF DRAWINGS AND TECHNICAL DOCUMENTS | PRODUCT INFORMATION CENTER 1-800-522-6752 | VOLTAGE RATING: NOT APPLICABLE | MATERIAL COPPER PER AMP SPEC 100-2 ② ANNEALED | NAME TERMINAL, RING TONGUE, FLAG, SOLISTRAND™ | SIZE ③ 00779 |
| FOR APPLICATION TOOLING INFORMATION | TOOLING ASSISTANCE CENTER 1-800-722-1111 | WIRE CROSS SECTIONAL AREA RANGE: 2.62-6.64mm ² [5,180-13,100] CIR MILS SOLID OR STRANDED | FINISH TIN PLATE ③ 0.00254 [0.00100] MIN THK PER AMP SPEC 112-16 | DRAWING NO ③=36271 | SCALE 10:1 |
| FOR ORDER ENTRY | 1-800-526-5142 | THIS DRAWING IS A CONTROLLED DOCUMENT FOR AMP INCORPORATED. IT IS SUBJECT TO CHANGE AND THE CONTROLLING ENGINEERING ORGANIZATION SHOULD BE CONTACTED FOR THE LATEST REVISION. | | SHEET 1 OF 1 | |