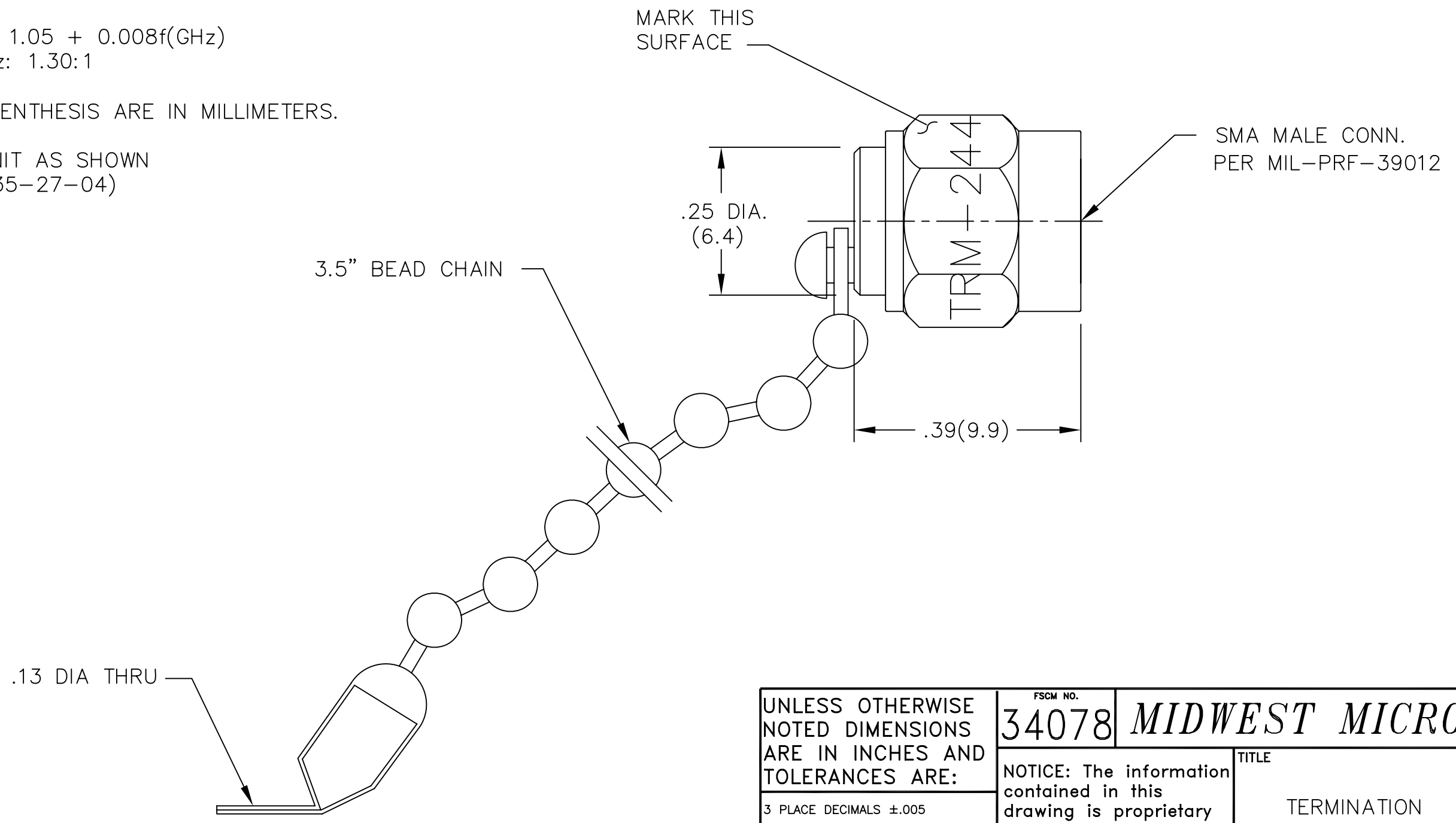


- NOTES:
- 1.0 ELECTRICAL SPECIFICATIONS:
 - 1.1 FREQUENCY RANGE: DC to 26.5 GHz
 - 1.2 MAXIMUM INPUT POWER: 0.5 WATTS @ +25°C
DERATED LINEARLY TO 0 WATTS @ +125°C
 - 1.3 OPERATING TEMP. RANGE: -55°C to +125°C
 - 1.4 IMPEDANCE: 50 OHMS
 - 1.5 VSWR (MAX.):
DC to 18.0 GHz: 1.05 + 0.008f(GHz)
18.0 to 26.5 GHz: 1.30:1

2.0 DIMENSIONS IN PARENTHESIS ARE IN MILLIMETERS.

3.0 MARKING: MARK UNIT AS SHOWN
(REF.: INK-09035-27-04)



REV.	DESCRIPTION	DATE
-	RELEASED	3/10/94
A	ECN 14170	12/19/94
A1	ADDED TITLEBLOCK	11/15/05

UNLESS OTHERWISE NOTED DIMENSIONS ARE IN INCHES AND TOLERANCES ARE: 3 PLACE DECIMALS ±.005 2 PLACE DECIMALS ±.02 FRACTIONS ±1/64 PARALLELITY: T.I.R. _____ FLATNESS: T.I.R. _____ CONCENTRICITY: T.I.R. _____ ANGLES AND PERPENDICULARITY: ±1°	FSCM NO.	34078 MIDWEST MICROWAVE	
	NOTICE: The information contained in this drawing is proprietary and must not be used without the permission of Midwest Microwave		TITLE
			TERMINATION
	DRAWN/DATE A.BEATTY 2/7/94		ENG./DATE G.KOZAK 3/9/94
CHECKED/DATE M.HOLLMAN 3/8/94		APPROVED/DATE	TRM-2443-MC-SMA-02
		SCALE: 5=1	SHEET 1 of 1