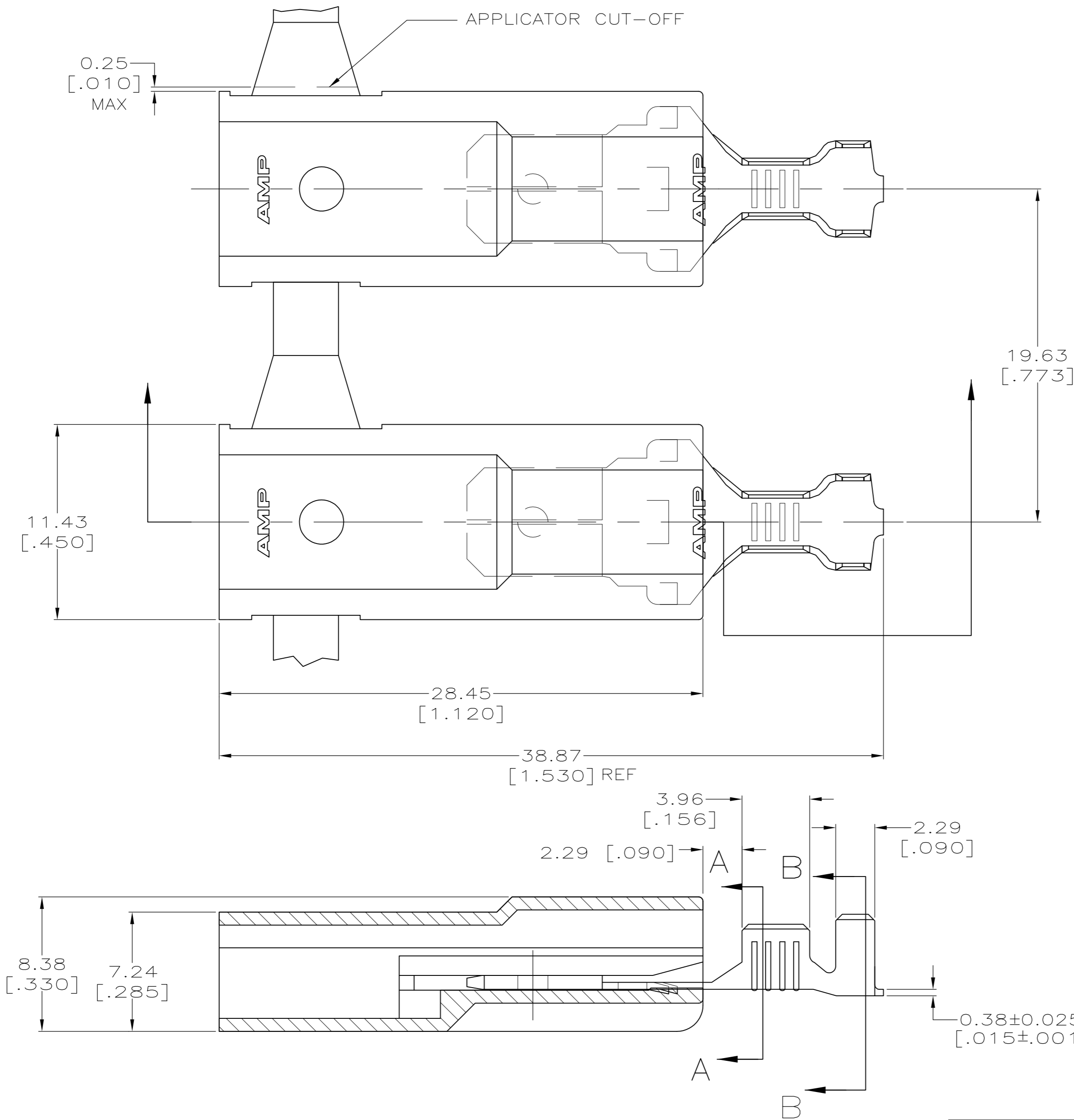
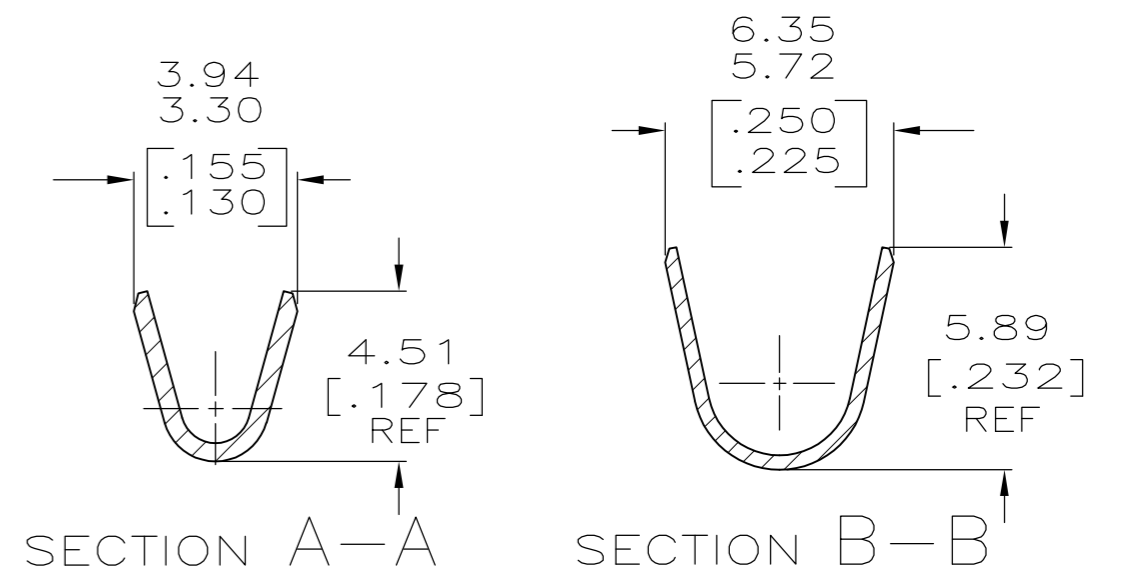


THIS DRAWING IS UNPUBLISHED. RELEASED FOR PUBLICATION
 © COPYRIGHT - By - ALL RIGHTS RESERVED.

LOC	DIST	REVISIONS			
P	LTR	DESCRIPTION	DATE	DWN	APVD
AF	50	G2	REVISED PER ECR-12-013219	08JAN13	KH KR



- 1 FASTON TAB BASE #1217166, ARE USED IN THIS PRODUCT.
- 2 WIRE SIZE IS [#18-#14] AWG.
- 3 INSULATION RANGE IS 3.30-4.57 [.130-.180] DIA.
- 4 MATES WITH A 6.35 X 0.81 [.250 X .032] RECEPTACLE.
- 5 MATERIAL & FINISH
 TERMINAL - BRASS, SEE TABLE
 HOUSING - 6/6 NYLON, NATURAL
- 6 PRELIMINARY -NOT FOR PRODUCTION



NICKEL PLATE	521217-3	6
TIN PLATE	521217-2	
-	521217-1	
FINISH	PART NO.	

THIS DRAWING IS A CONTROLLED DOCUMENT.		DWN	JR RUTH	20MAY99	TE TE Connectivity
DIMENSIONS: mm [INCHES]		CHK	MS FEHER	20MAY99	
TOLERANCES UNLESS OTHERWISE SPECIFIED:		APVD	J HUMMEL	20MAY99	
0 PLC ± -		PRODUCT SPEC	108-1285		
1 PLC ± -		APPLICATION SPEC	114-2124		NAME
2 PLC ± 0.25 [.010]		MATERIAL	-	5	ASSEMBLY, TAB, ULTRA-POD, 6.35 [.250] SERIES
3 PLC ± -		FINISH	-	5	SIZE
4 PLC ± -					CAGE CODE
ANGLES ± -					DRAWING NO
FINISH					RESTRICTED TO
					A2
					00779
					C=521217
					SCALE
					5:1
					SHEET
					1 OF 1
					REV
					G2